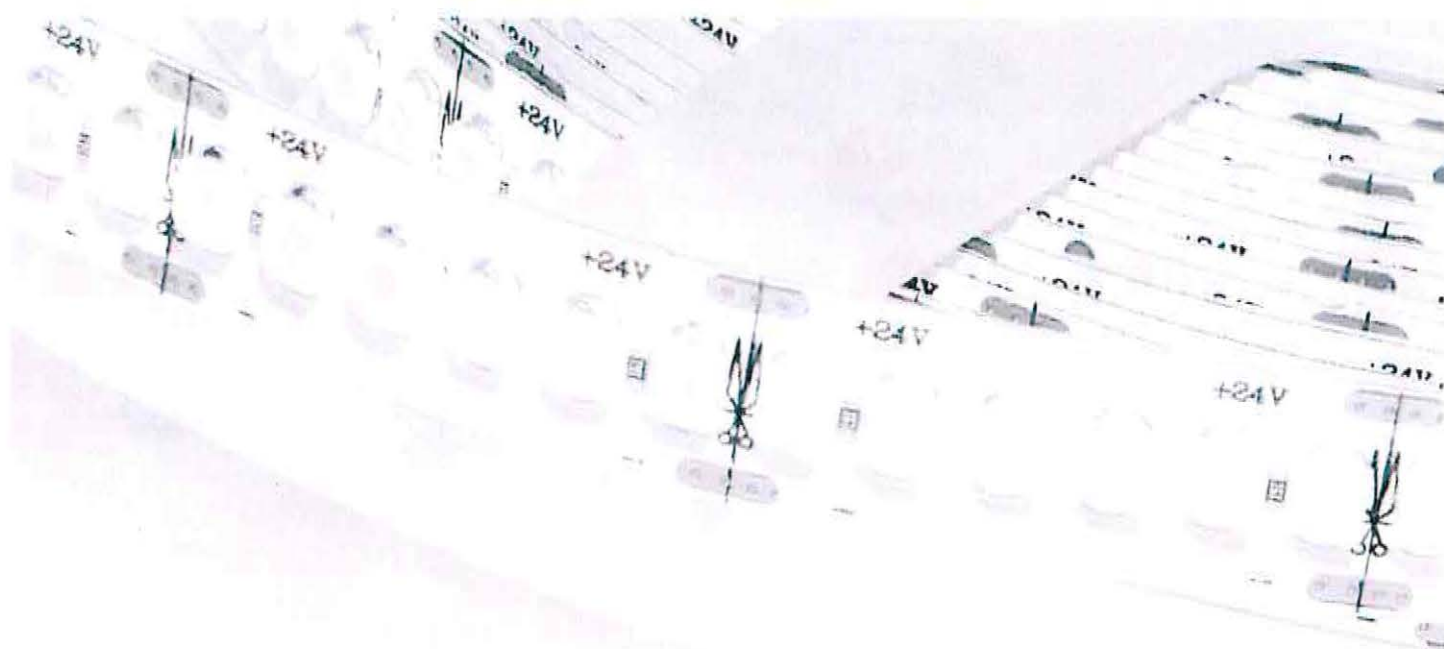


# STRIP LED



Le nuove Strip Led High Quality garantiscono una qualità della temperatura colore costante, valorizzando gli ambienti e la qualità del confort visivo.

Le Strip Led possono essere impiegate sia per scopi estetici che come fonte di illuminazione vera e propria, soprattutto anche in ambienti dove è sufficiente una luce soffusa e non troppo intensa, ma diffusa (come discoteche, cinema, sale o saloni).

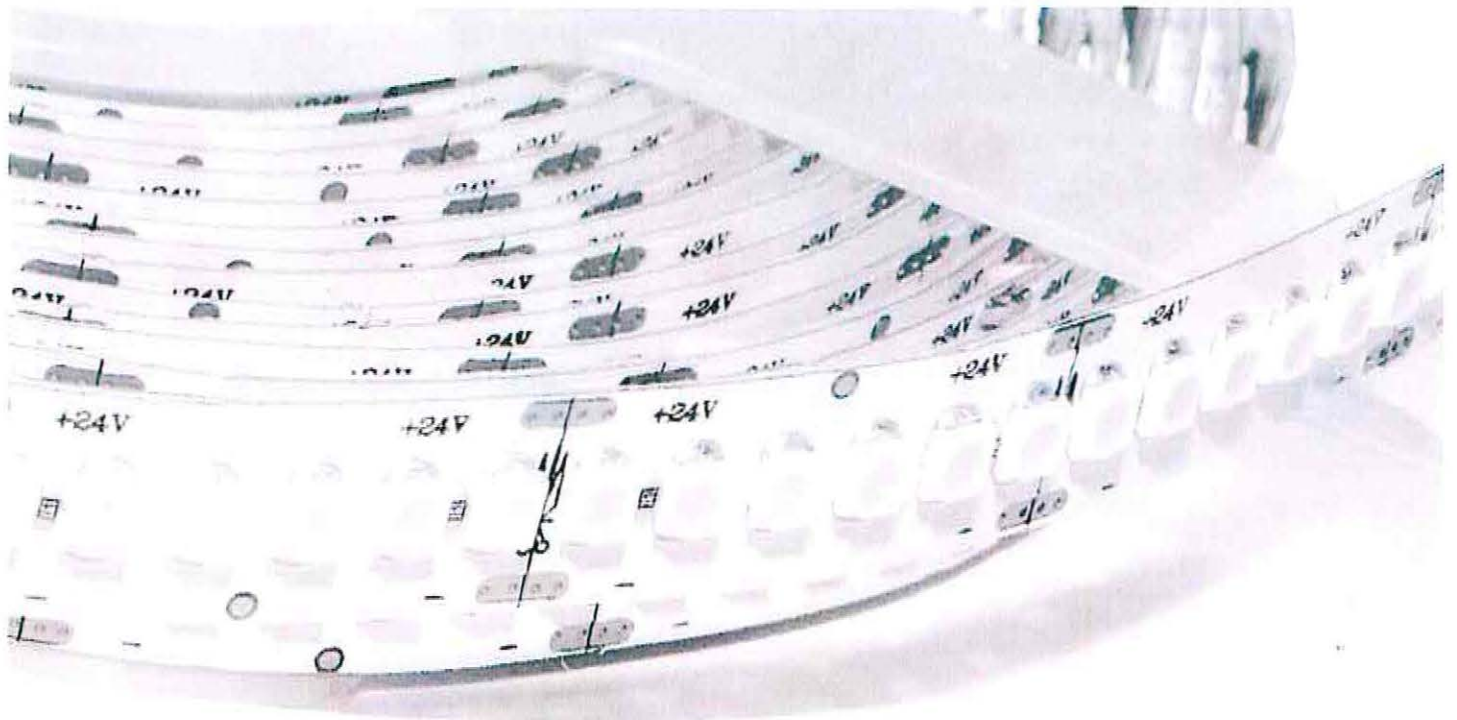
Si consiglia di usare le Strip Led in abbinamento ai profili di alluminio per garantire una migliore dissipazione e un'ottimale durata del prodotto.

The new LED stripes High Quality guarantees a uniform light-temperature and increases ambience's values and visual comfort.

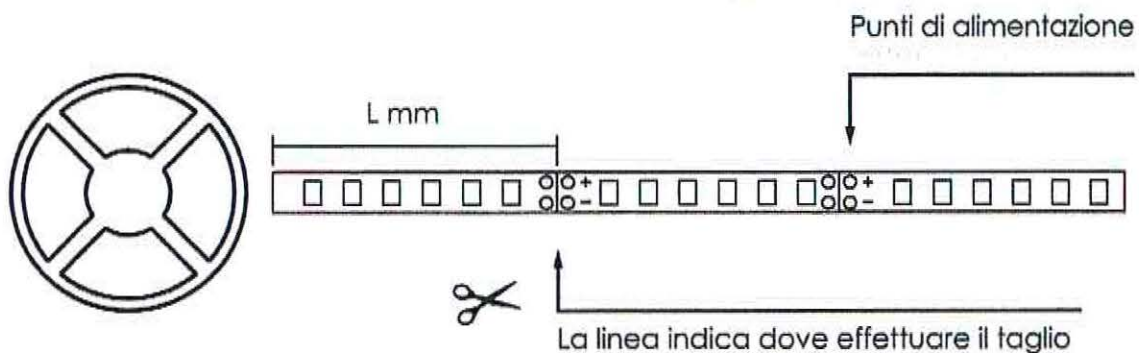
Led Strip achieves both aesthetic effects and functional purposes, especially in environments where there's the need of a soft light and not too intense, but diffused illumination (such as discos, cinemas, or salons).

We recommend using Led Strips in combination with aluminum profiles to ensure better dissipation and optimum durability.





ESEMPIO DI TAGLIO STRIP LED HIGH QUALITY (BOBINA DA 5M)  
CUTTING ILLUSTRATION FOR LED STRIPE HIGH QUALITY (5M ROLL)



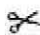




**CODIFICA PERSONALIZZATA**

Per ordini di STRIP LED le cui lunghezze sono diverse da quelle standard, fornite nelle prossime pagine, è possibile utilizzare il codice riferito all'unità di misura di 1 centimetro. E' sufficiente indicare la quantità dei pezzi per ogni centimetro da ordinare. ( La lunghezza fornita, sarà adeguata al taglio corrispondente più vicino alla misura possibile per ciascun tipo di strip led.)




**ESEMPIO D'ORDINE per lunghezze personalizzate.**

STRIP LED 153 cm = codice 9824102721 x quantità 153 = ordinare; n° 153 pz del codice 9824102721  
**ATTENZIONE:**  
Ogni codice d'ordine e quantità di pezzi si deve riferire alla singola metratura necessaria.  
Non è possibile sommare le lunghezze di più prodotti, per cui se servissero 2 STRIP LED da 153 cm, dovrebbero essere ordinati :  
153 pz del codice 9824102721 e 153 pz del codice 9824102721

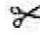


## HIGH QUALITY CRI>80 IP20 - 24V - L 5mt

DIMENSIONE E TAGLIO DIMENSION AND CUT		WATT W/m	LUMEN lm/m	COLORE-K COLOUR -K	CODICE CODE	RIF. ETICHETTA CLASSE ENERGETICA PAG 202
8 x 2 x 5000 ( 120 Led/m ) Flux: 80 lm/w	 50	9.6	740	2700K <input type="checkbox"/>	9824102720	1
			760	3000K <input type="checkbox"/>	9824103020	1
			780	4000K <input type="checkbox"/>	9824104220	1
	<hr/>					
	 33	14.4	1150	2700K <input type="checkbox"/>	9824152720	2
			1170	3000K <input type="checkbox"/>	9824153020	2
1195			4000K <input type="checkbox"/>	9824154220	2	
	<hr/>					
	 25	19.2	1550	2700K <input type="checkbox"/>	9824202720	3
			1590	3000K <input type="checkbox"/>	9824203020	3
1610			4000K <input type="checkbox"/>	9824204220	3	
10 x 2 x 5000 ( 240 Led/m ) Flux: 80 lm/w	<hr/>					

## ULTRA SLIM CRI>80 IP20 - 24V

5 x 2 x 5000 ( 120 Led/m ) Flux: 80 lm/w	 50	9.6	770	2700K <input type="checkbox"/>	9805102720	1
			790	3000K <input type="checkbox"/>	9805103020	1
			810	4000K <input type="checkbox"/>	9805104220	1
	<hr/>					
	 33	14.4	1170	2700K <input type="checkbox"/>	9805152720	2
			1190	3000K <input type="checkbox"/>	9805153020	2
1210			4000K <input type="checkbox"/>	9805154220	2	

## ULTRA SLIM CRI>95 IP20 - 24V

5 x 2 x 5000 ( 120 Led/m ) Flux: 80 lm/w	 50	9.6	770	2700K <input type="checkbox"/>	9805102920	1
			790	3000K <input type="checkbox"/>	9805103220	1
			810	4000K <input type="checkbox"/>	9805103920	1
	<hr/>					
	 33	14.4	1170	2700K <input type="checkbox"/>	9805152920	2
			1190	3000K <input type="checkbox"/>	9805153220	2
1210			4000K <input type="checkbox"/>	9805153920	2	

N.B. Temperatura colore LED +/- 100K

# 75W Single Output Switching Power Supply

# RS-75 series



### Features :

- Universal AC input / Full range
- Protections: Short circuit / Overload / Over voltage
- Cooling by free air convection
- LED indicator for power on
- 100% full load burn-in test
- All using 105°C long life electrolytic capacitors
- Withstand 300VAC surge input for 5 second
- High operating temperature up to 70°C
- Withstand 5G vibration test
- No load power consumption<0.5W
- High efficiency, long life and high reliability
- 3 years warranty

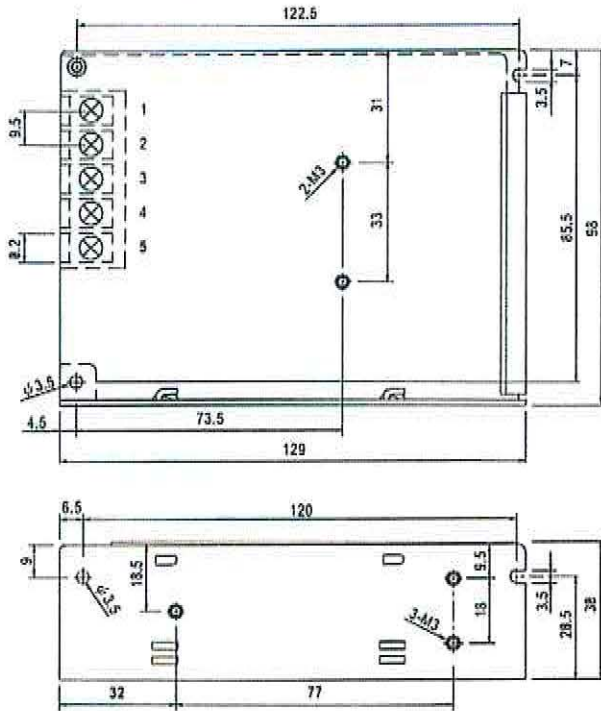


### SPECIFICATION

MODEL	RS-75-3.3	RS-75-5	RS-75-12	RS-75-15	RS-75-24	RS-75-48	
OUTPUT	DC VOLTAGE	3.3V	5V	12V	15V	24V	48V
	RATED CURRENT	15A	12A	6A	5A	3.2A	1.6A
	CURRENT RANGE	0 ~ 15A	0 ~ 12A	0 ~ 6A	0 ~ 5A	0 ~ 3.2A	0 ~ 1.6A
	RATED POWER	49.5W	60W	72W	75W	76.8W	76.8W
	RIPPLE & NOISE (max.) Note.2	80mVp-p	80mVp-p	120mVp-p	120mVp-p	120mVp-p	200mVp-p
	VOLTAGE ADJ. RANGE	3V ~ 3.6V	4.75 ~ 5.5V	10.8 ~ 13.2V	13.5 ~ 16.5V	22 ~ 27.6V	42 ~ 54V
	VOLTAGE TOLERANCE Note.3	±3.0%	±2.0%	±1.0%	±1.0%	±1.0%	±1.0%
	LINE REGULATION Note.4	±0.5%	±0.5%	±0.5%	±0.5%	±0.5%	±0.5%
	LOAD REGULATION Note.5	±2.0%	±1.0%	±0.5%	±0.5%	±0.5%	±0.5%
	SETUP, RISE TIME	500ms, 30ms/230VAC 1200ms, 30ms/115VAC at full load					
HOLD UP TIME (Typ.)	60ms/230VAC 14ms/115VAC at full load						
INPUT	VOLTAGE RANGE	88 ~ 264VAC 125 ~ 373VDC (Withstand 300VAC surge for 5sec. Without damage)					
	FREQUENCY RANGE	47 ~ 63Hz					
	EFFICIENCY(Typ.)	75%	79%	84.5%	86%	88.5%	89.5%
	AC CURRENT (Typ.)	2A/115VAC 1.2A/230VAC					
	INRUSH CURRENT (Typ.)	COLD START 40A/230VAC					
	LEAKAGE CURRENT	<2mA / 240VAC					
PROTECTION	OVERLOAD	110 ~ 150% rated output power Protection type : Hiccup mode, recovers automatically after fault condition is removed					
	OVER VOLTAGE	3.8 ~ 4.45V	6.75 ~ 6.75V	13.8 ~ 16.2V	17.25 ~ 20.25V	27.6 ~ 32.4V	55.2 ~ 64.8V
		Protection type : Hiccup mode, recovers automatically after fault condition is removed					
ENVIRONMENT	WORKING TEMP.	-25 ~ +70°C (Refer to "Derating Curve")					
	WORKING HUMIDITY	20 ~ 90% RH non-condensing					
	STORAGE TEMP., HUMIDITY	-40 ~ +85°C, 10 ~ 95% RH					
	TEMP. COEFFICIENT	±0.03%/°C (0-50°C)					
	VIBRATION	10 ~ 500Hz, 5G 10min./1cycle, period for 60min. each along X, Y, Z axes					
SAFETY & EMC (Note 6)	SAFETY STANDARDS	UL60950-1, TUV EN60950-1 approved					
	WITHSTAND VOLTAGE	I/P-O/P:3KVAC I/P-FG:1.5KVAC O/P-FG:0.5KVAC					
	ISOLATION RESISTANCE	I/P-O/P, I/P-FG, O/P-FG:100M Ohms / 500VDC / 25°C / 70% RH					
	EMC EMISSION	Compliance to EN55022 (CISPR22) Class B, EN61000-3-2,-3					
OTHERS	EMC IMMUNITY	Compliance to EN61000-4-2,3,4,5,6,8,11, EN61000-6-2 (EN50082-2), heavy industry level, criteria A					
	MTBF	265Khrs min. MIL-HDBK-217F (25°C)					
	DIMENSION	129*97*38mm (L*W*H)					
NOTE	PACKING	0.41Kg; 30pcs/13.3Kg/0.86CUFT					
		1. All parameters NOT specially mentioned are measured at 230VAC input, rated load and 25°C of ambient temperature. 2. Ripple & noise are measured at 20MHz of bandwidth by using a 12" twisted pair-wire terminated with a 0.1uf & 47uf parallel capacitor. 3. Tolerance : includes set up tolerance, line regulation and load regulation. 4. Line regulation is measured from low line to high line at rated load. 5. Load regulation is measured from 0% to 100% rated load. 6. The power supply is considered a component which will be installed into a final equipment. The final equipment must be re-confirmed that it still meets EMC directives. For guidance on how to perform these EMC tests, please refer to "EMI testing of component power supplies," (as available on <a href="http://www.meanwell.com">http://www.meanwell.com</a> )					

■ Mechanical Specification

Case No. 903 Unit:mm

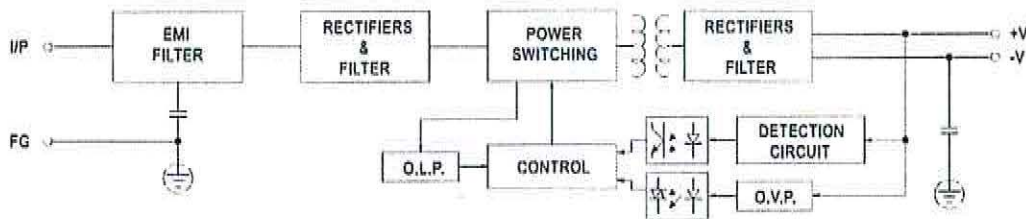


Terminal Pin No. Assignment

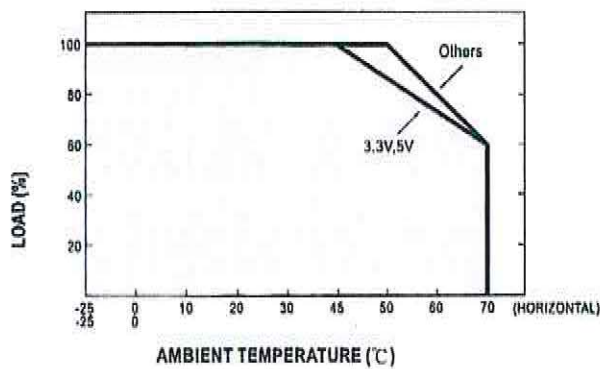
Pin No.	Assignment	Pin No.	Assignment
1	AC/L	4	DC OUTPUT -V
2	AC/N	5	DC OUTPUT +V
3	FG ↓		

■ Block Diagram

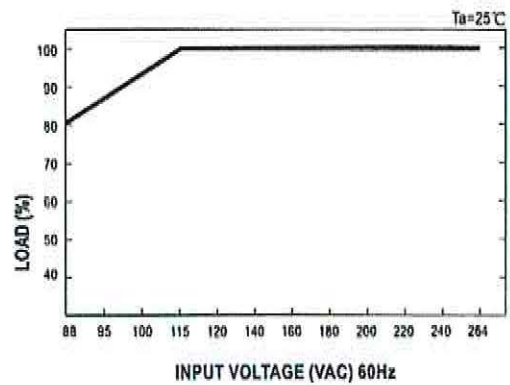
fosc : 60KHz

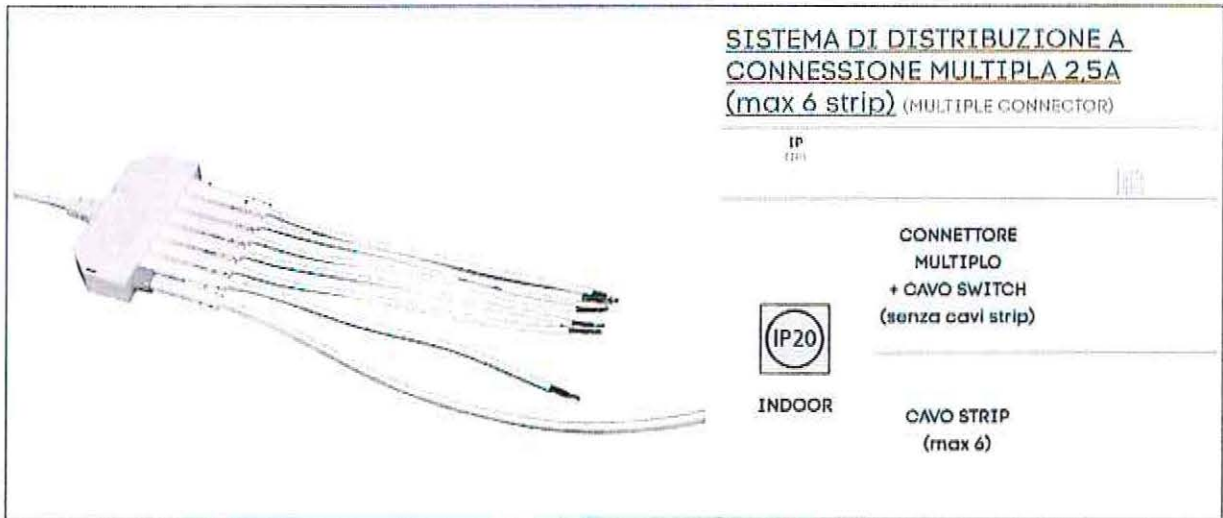


■ Derating Curve

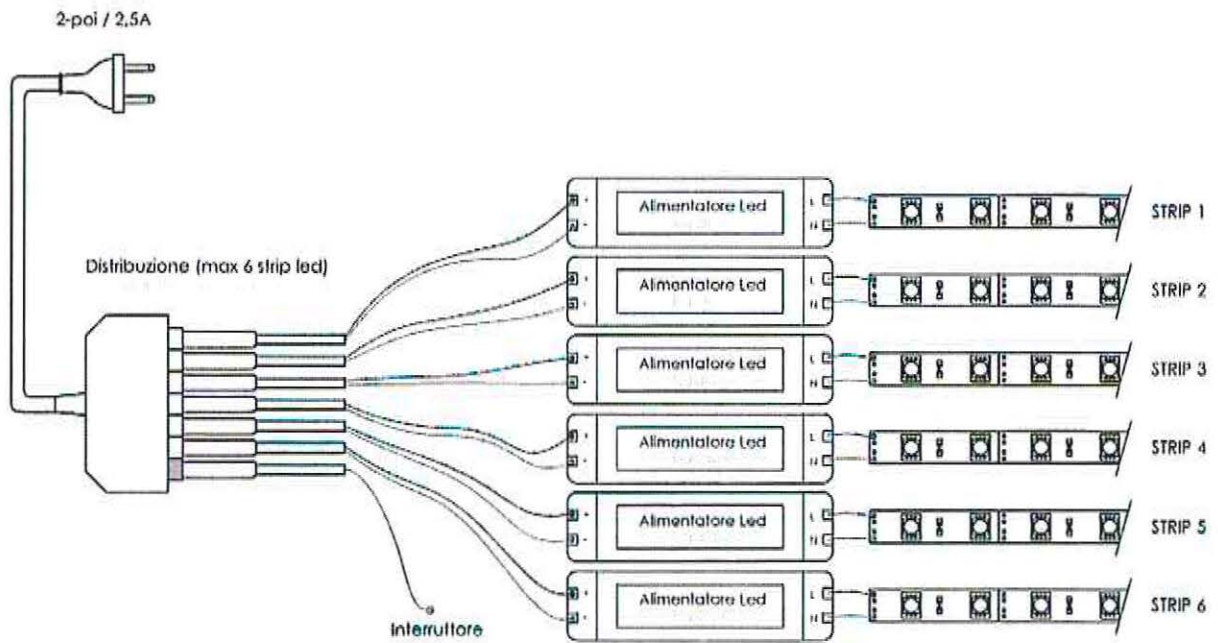


■ Output Derating VS Input Voltage





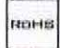



**SCHEMA DI COLLEGAMENTO (WIRING EXAMPLE)**



# MC01 (MICROPROFILO)



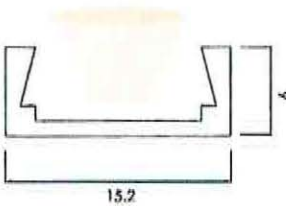
PER LED (dag 76)



PROFILO MC01  
COVER

1800 x 20 x 20

MC01, l'entry level dei nostri profili in alluminio. Compatto e flessibile. MC01 è la massima espressione tecnologica della microestrusione dell'alluminio, finalizzata alla dissipazione termica. Abbinato alla cover in policarbonato assicura una luce morbida e diffusa.



Il MC01 è il profilo di alluminio con la più alta tecnologia di microestrusione di alluminio. È il profilo di alluminio con la più alta tecnologia di microestrusione di alluminio. È il profilo di alluminio con la più alta tecnologia di microestrusione di alluminio.





STAFFA DI FISSAGGIO  
A PARETE

Modello: 65000000



TESTATA DI CHIUSURA (BIANCO)

Modello: 65000001



TESTATA DI CHIUSURA  
CON PASSACAVO (BIANCO)

Modello: 65000002

# PROFILO COMPATTO

dal design

## MINIMAL







**PROFILO MC01** (PROF. ILL. MC01)

LUNGHEZZA (LENGTH)	FINITURA (FINISHES)	CODICE (CODE)
200 cm	<input type="checkbox"/> ANODIZZATO anodized	1280111202

**NOTA BENE** (Please note)


**IL PROFILO MC01 VIENE FORNITO COMPLETO DI:**  
The profile MC01 is furnished with:

- N° 1 COVER OPALE (N° 1 OPAL COVER)
- N° 2 TESTATE DI CHIUSURA (N° 2 DEAD ENDS)
- N° 2 STAFFE DI MONTAGGIO (N° 2 MOUNTING CLIPS)

**NOTA BENE** (Please note)


**Si consiglia di inserire la cover nell'estruso prima di fissare MC01 in posizione definitiva**  
We recommend to put the cover into the profile before fixing

**ACCESSORI ORDINABILI ANCHE IN AGGIUNTA AL KIT** (ACCESSORIES)




**TESTATA DI CHIUSURA**  
(DEAD END)

FINITURA (FINISHES)	CODICE (CODE)
<input type="checkbox"/> BIANCO white	1280000001



**TESTATA DI CHIUSURA (PASSACAVO)**  
(DEAD END WITH HOLE)

FINITURA (FINISHES)	CODICE (CODE)
<input type="checkbox"/> BIANCO white	1280000002

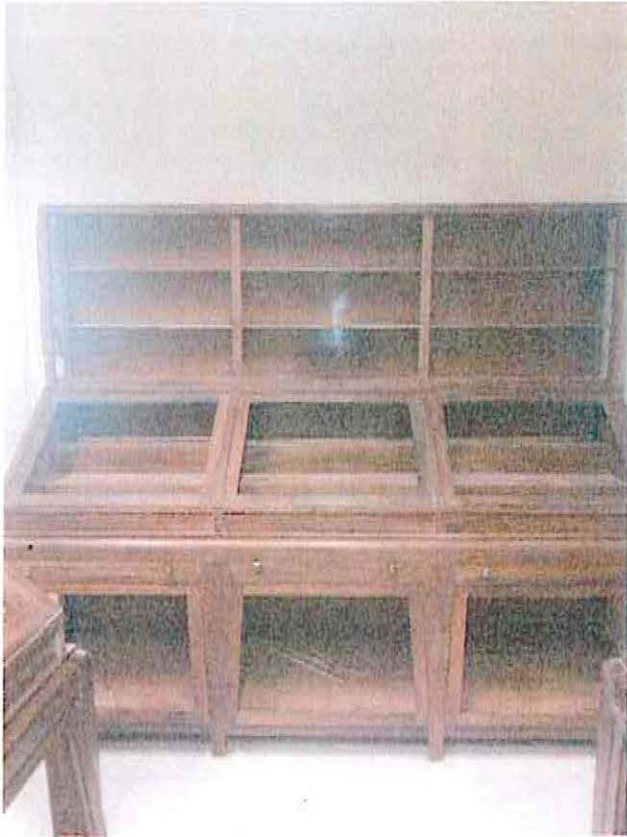


**STAFFA FISSAGGIO A PARETE**  
(WALL MOUNTING CLIP)

FINITURA (FINISHES)	CODICE (CODE)
<input type="checkbox"/> ANODIZZATO anodized	1280000003



tec a tipo 1



teca tipo 2



teca tipo 3



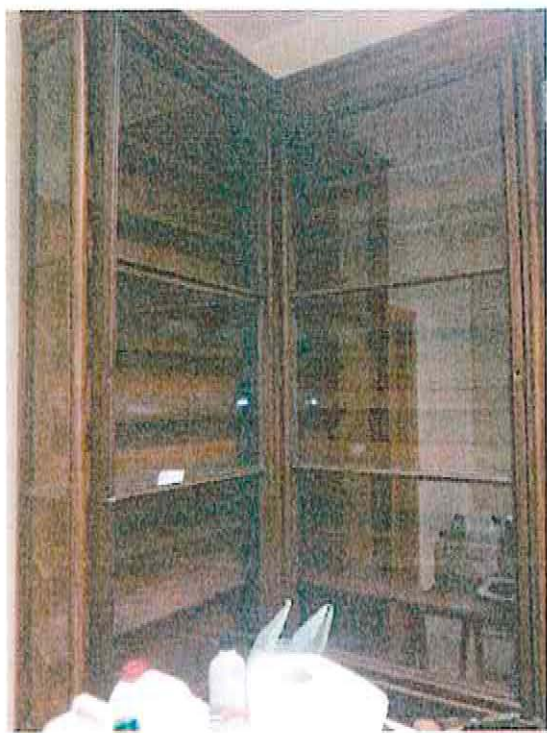
teca tipo 4



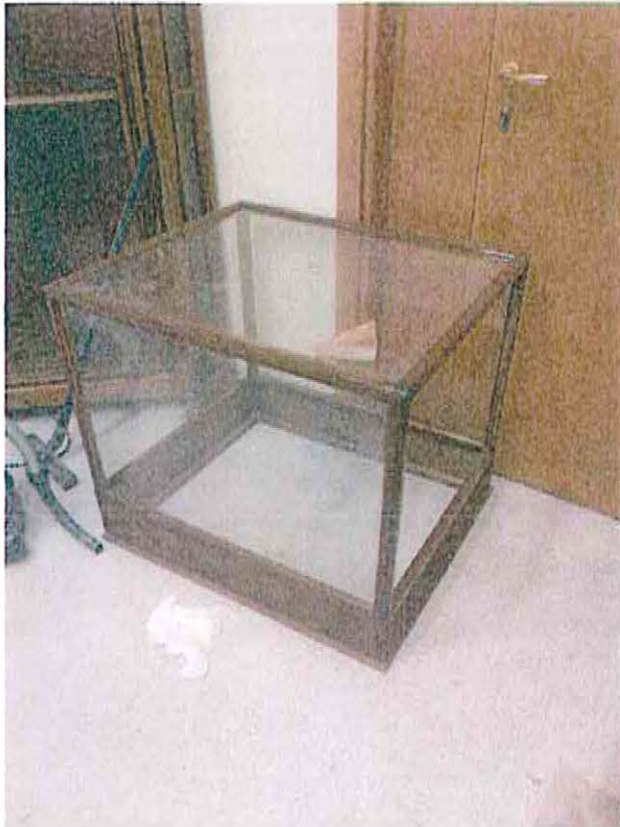
teca tipo 5



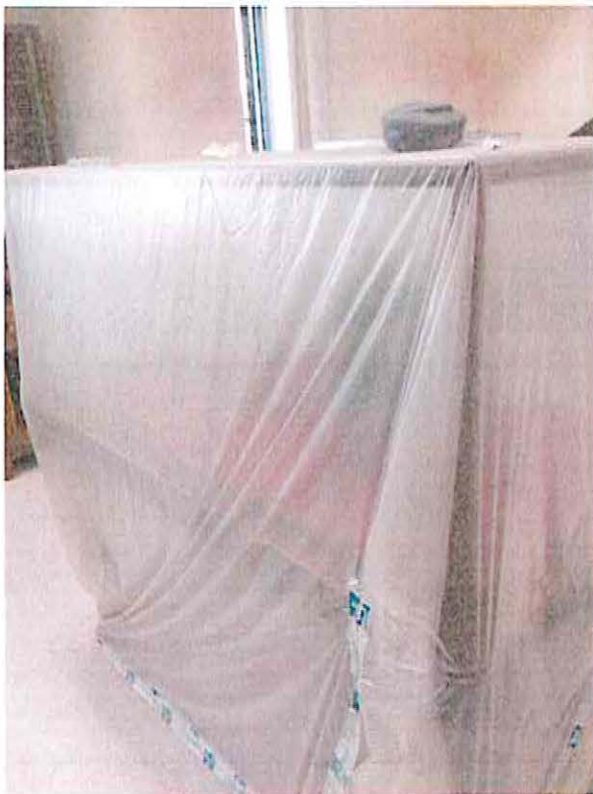
teca tipo 6



teca tipo 7



teca tipo 8



teca tipo 9