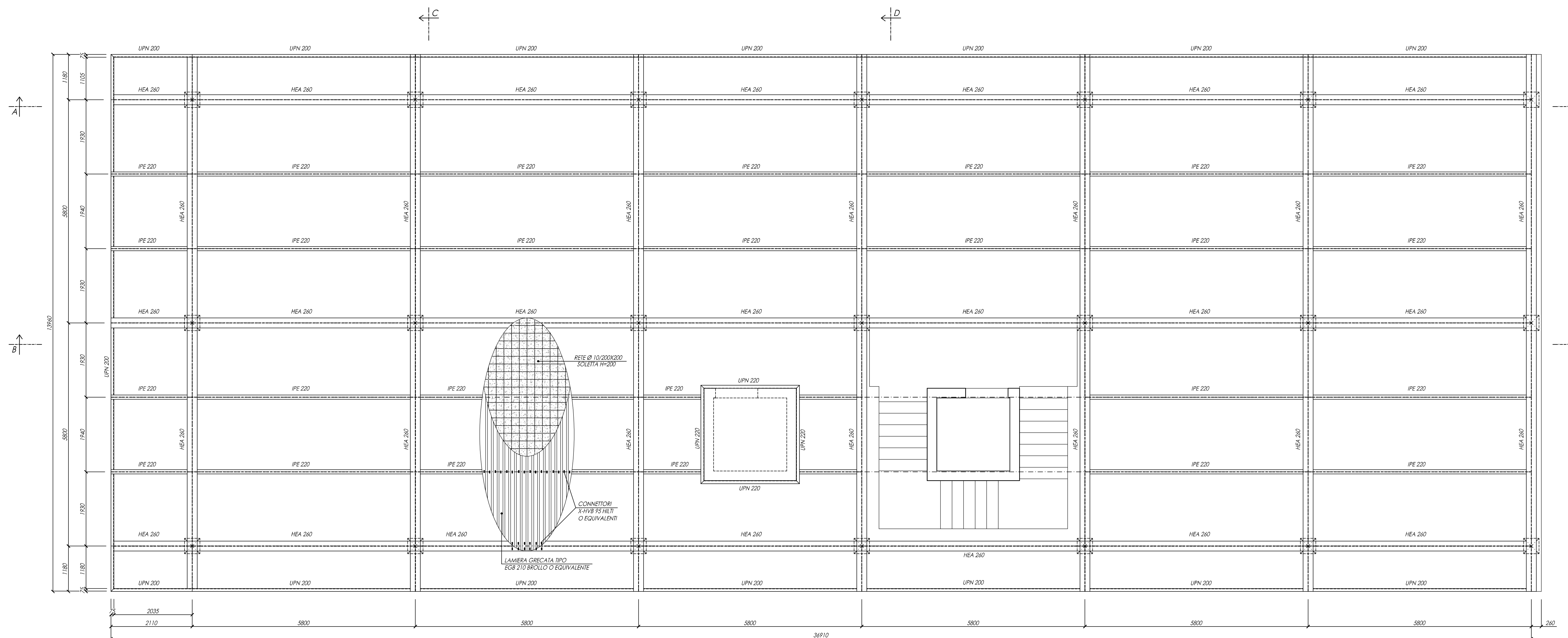
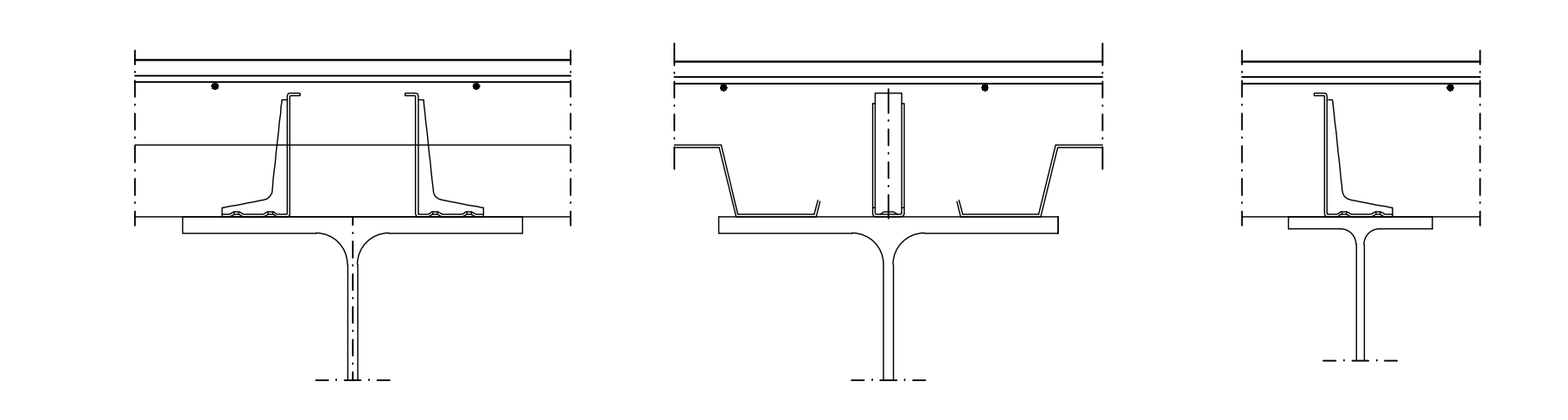
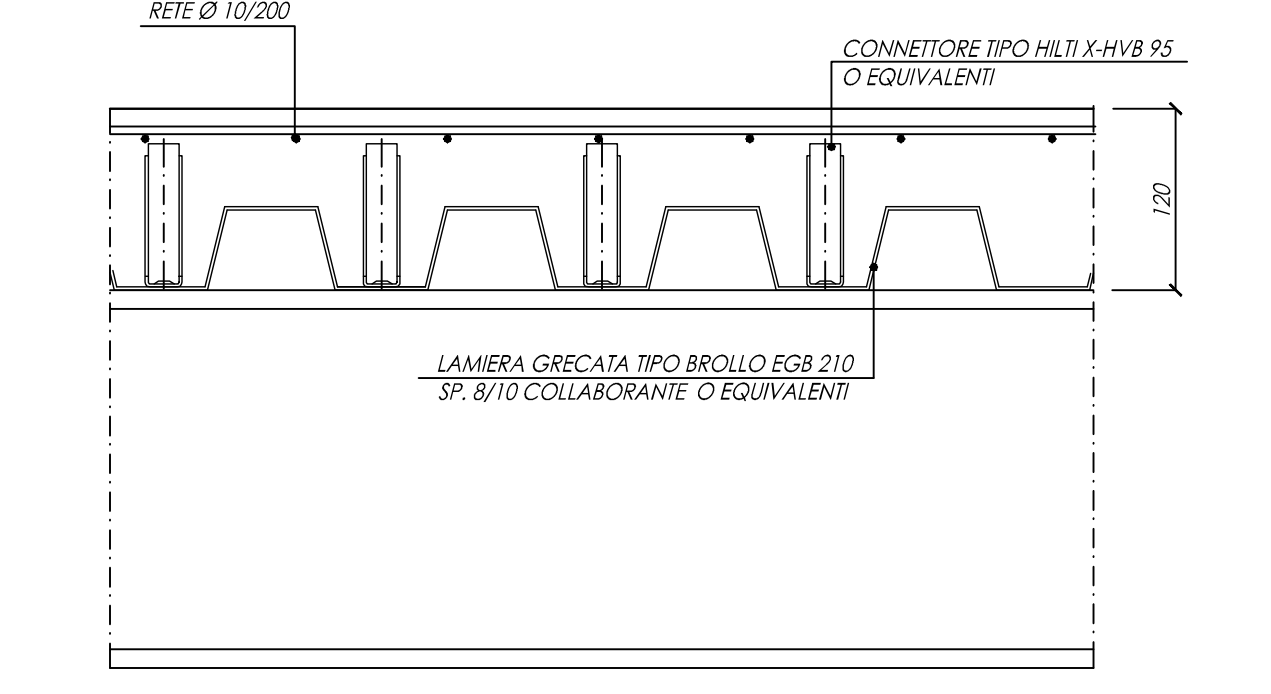


ORDITURA IMPALCATO A QUOTA TOP FERRO 21.69

1:50

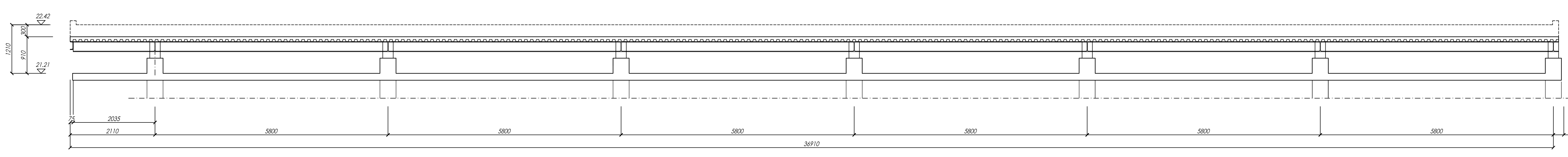


PARTICOLARE SOLAIO



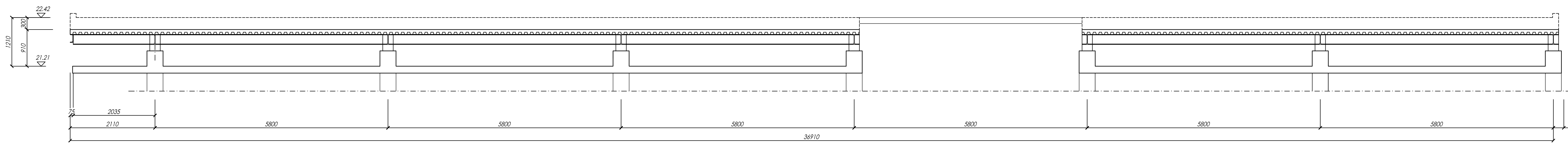
SEZIONE A-A

1:50



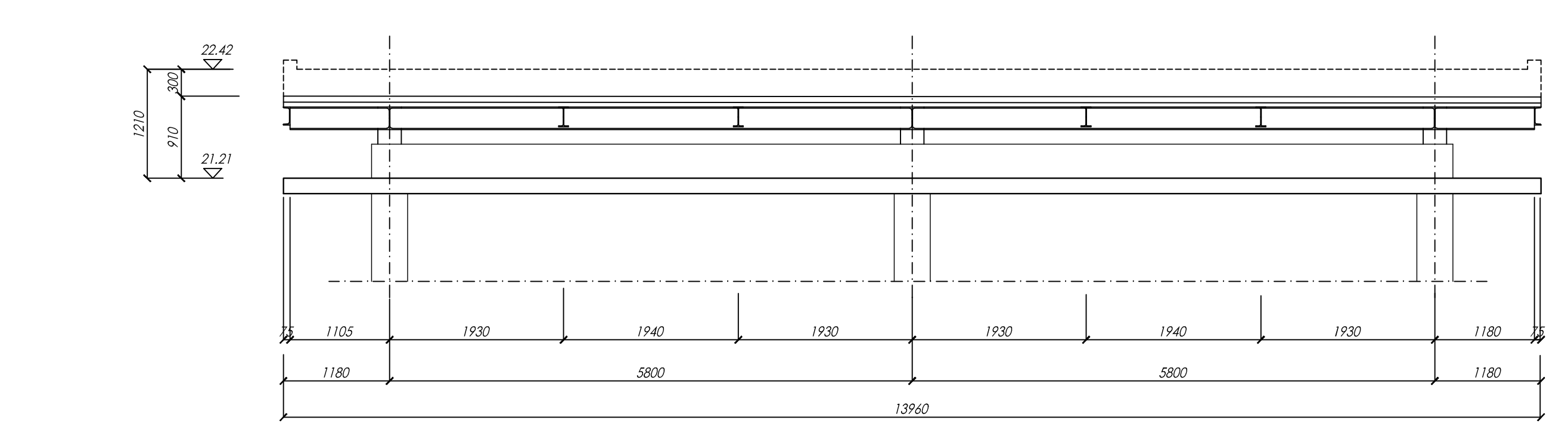
SEZIONE B-B

1:50



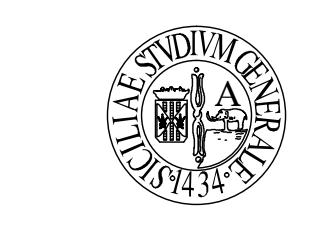
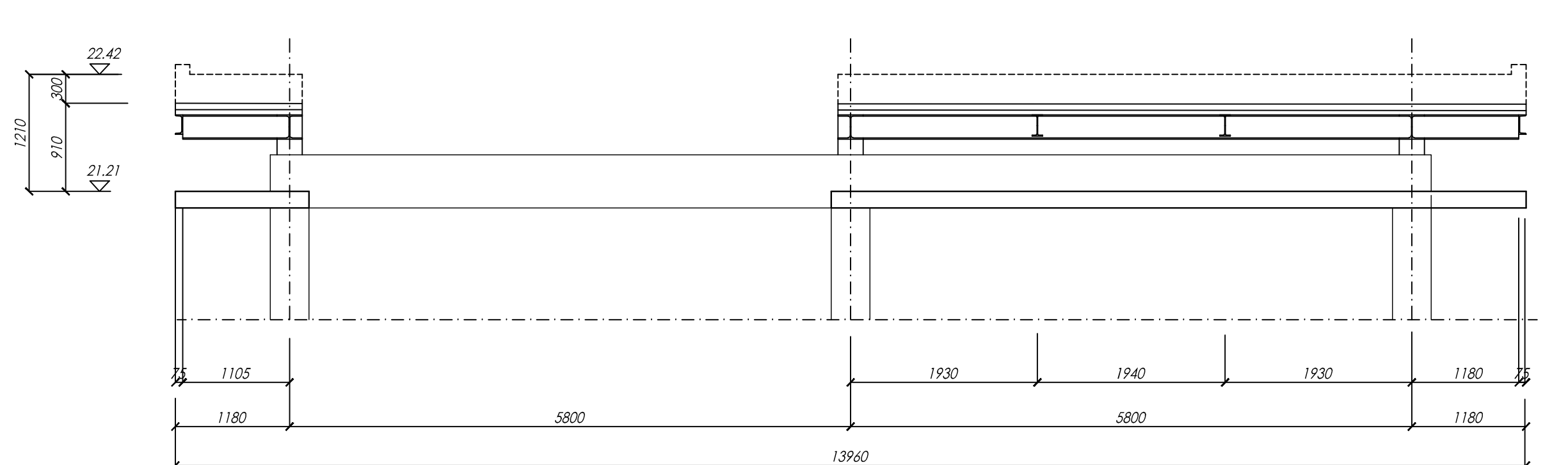
SEZIONE C-C

1:50



SEZIONE D-D

1:50



WPαOÙUwpA005A JW00000VCE

A.P.S.E.Ma.



PROGETTO DEFINITIVO

A.27 | Scala 1:100
Progetto delle strutture
 Stato di progetto
 - carpent. impalcato q.ta 21,69
 (quota base tetto-giardino)
 Data: aprile 2020 | ABB:

INTERVENTI DI RIFUNZIONALIZZAZIONE
 OSSIA: A) A) T A G R E V I S E R E N D I P R I P I L I T A D I A D E
 VIA GALLO, CATANIA "PALAZZO BOSCARINO"
 BLOCCO 1
 INTERVENTI DI ADEGUAMENTO SISMICO

RESPONSABILE PROGETTO Ing. G. L. INCONA	COORDINATORE GENERALE Ing. P. M. CALO' E A. GREGO	PROGETTISTI Ing. G. L. INCONA, Ing. A. RIZZO, Ing. V. VITTORIA	CONSEGLIERI Ing. P. M. CALO' E A. GREGO, Ing. P. M. CALO' E A. GREGO, Ing. P. M. CALO' E A. GREGO	ING. G. L. INCONA ING. G. L. INCONA	ING. G. L. INCONA ING. G. L. INCONA	ING. G. L. INCONA ING. G. L. INCONA	ING. G. L. INCONA ING. G. L. INCONA
--	--	---	--	--	--	--	--